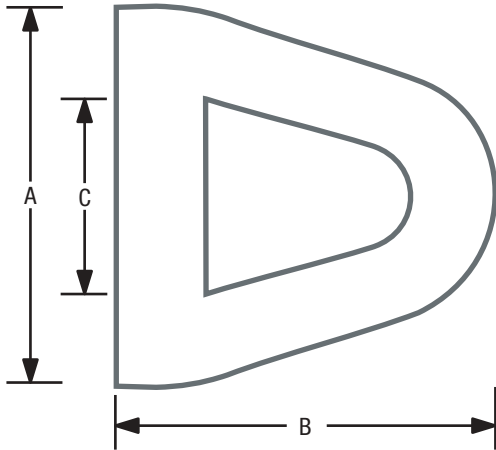




MARINE FENDER

product data sheet

D FENDER



DDW50 ACTUAL SIZE

The Derby marine fender range is designed and manufactured in Australia. It is long lasting and provides superior protection (compared to plastics and other materials) between vessels and fixed and floating structures.

Fenders can be attached to the face of a wharf, pontoon or vessel by mounting bars, bolts, chains, ropes or brackets.

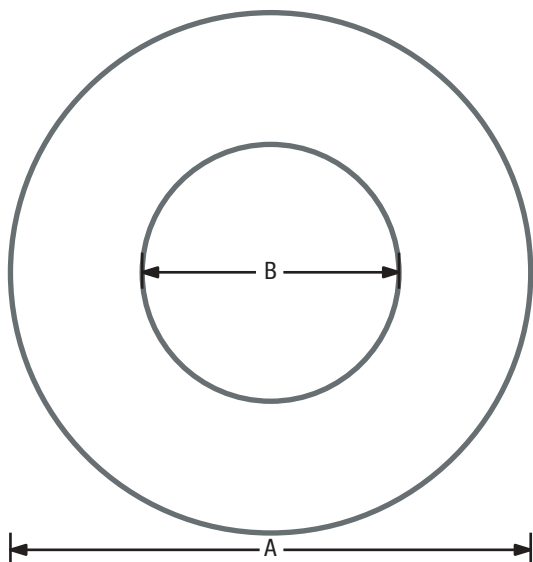
PRODUCT CODE	A (mm)	B (mm)	C (mm)
DDW50	50	50	25
DDW75	75	70	45
DDW100	100	95	50
Made to order up to and including:			
DDW200	200	150	130
DDW300	300	250	190

The Derby proprietary compound has been developed for both salt and fresh water applications and exhibits these properties.

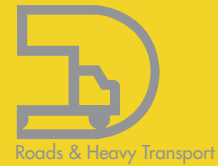
All products are supplied in minimum 6m lengths, Derby Rubber can also cut and drill to specifications. Commercial tolerance of $\pm 3\%$ apply to all dimensions.

	WHITE	BLACK
Shear Resistant	HIGH	HIGH
Cushioning	HIGH	HIGH
UV Protection	HIGH	HIGH
Non-marking	✓	—
Non-conductive prevents electrolysis	✓	—

ROUND FENDER



PRODUCT CODE	A (mm)	B (mm)
Made to order up to and including:		
DRFW100	100	50
DRFW150	150	75
DRFW200	200	100
DRFW300	300	150



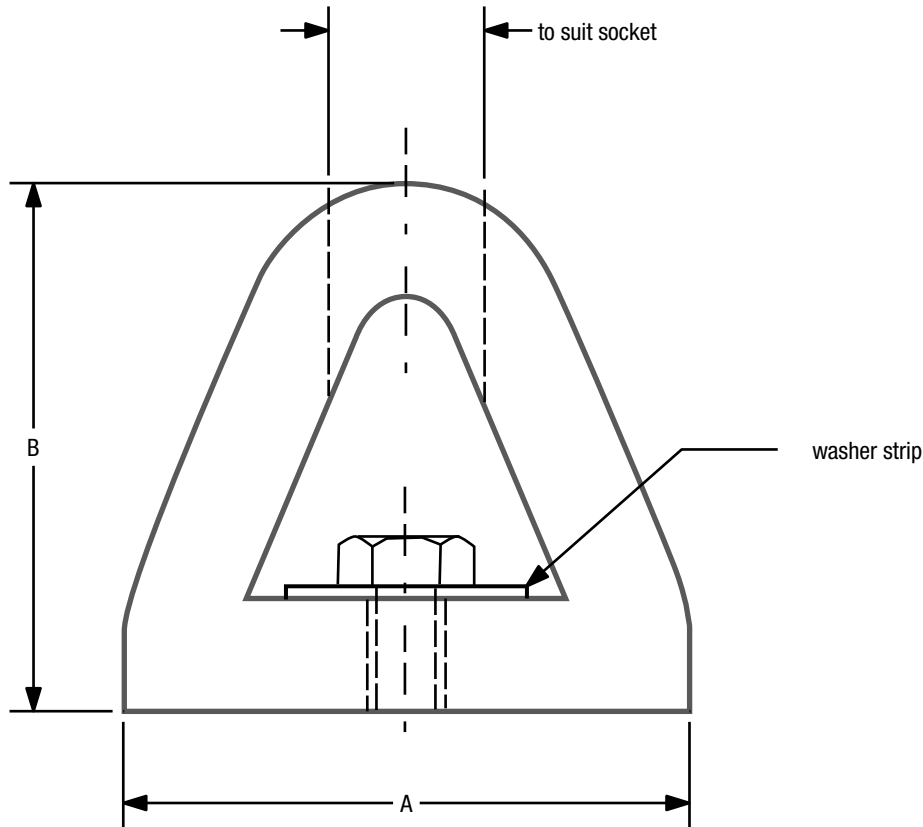
84 Derby Street
Silverwater NSW 2128
AUSTRALIA



MARINE FENDER

product data sheet

FIXING DETAILS FOR FENDERING



DD*75 ACTUAL SIZE

All dimensions in millimetres.

PRODUCT CODE	A	B	BOLT SIZE	# WASHER STRIP (width x thickness x bolt spacing)	WALL SECTION
DD*50	50	50	M8	20 x 1.6 x 200	9.5
DD*75	75	70	M10	25 x 1.6 x 200	11.0
DD*100	100	95	M12	30 x 3.0 x 250	15.0
DD*200	200	150	M20	40 x 3.0 x 300	30.0
DD*300	300	250	M24	50 x 5.0 x 400	50.0

* Denotes colour (W=White; G=Grey; B=Black) i.e. DDW75

Strip manufactured from st/steel or H.D.G m/steel.



84 Derby Street
Silverwater NSW 2128
AUSTRALIA

tel. +61 2 9648 4911
fax. +61 2 9648 4783

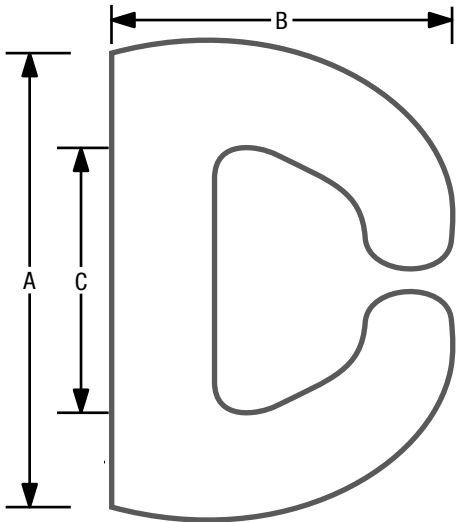
www.derbyrubber.com.au



MARINE FENDER

product data sheet

OPEN FENDER



DOF60 ACTUAL SIZE

PRODUCT CODE	A (mm)	B (mm)	C (mm)
DOF60	60	50	35
DOF80	80	70	50
DOF100	100	75	55

The Derby marine fender range is designed and manufactured in Australia. It is long lasting and provides superior protection (compared to plastics and other materials) between vessels and fixed and floating structures.

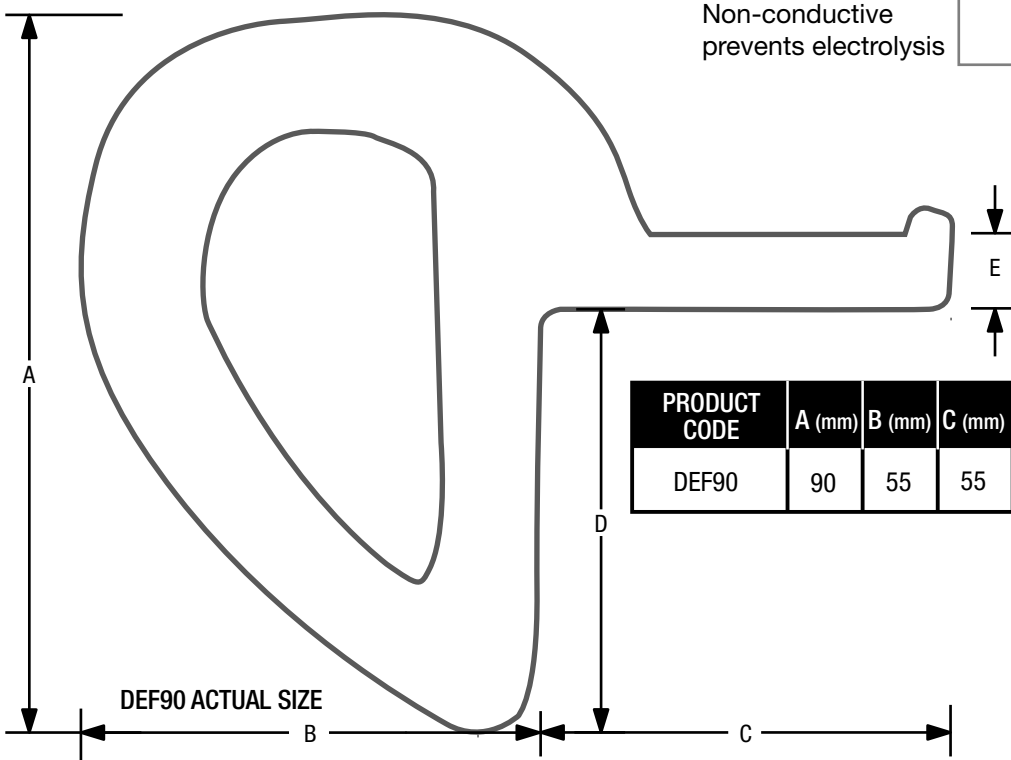
Fenders can be attached to the face of a wharf, pontoon or vessel by mounting bars, bolts, chains, ropes or brackets.

All products are supplied in minimum 6m lengths, Derby Rubber can also cut and drill to specifications. Commercial tolerance of $\pm 3\%$ apply to all dimensions.

The Derby proprietary compound has been developed for both salt and fresh water applications and exhibits these properties.

	WHITE	BLACK
Shear Resistant	HIGH	HIGH
Cushioning	HIGH	HIGH
UV Protection	HIGH	HIGH
Non-marking	✓	—
Non-conductive prevents electrolysis	✓	—

EDGE FENDER



DEF90 ACTUAL SIZE

PRODUCT CODE	A (mm)	B (mm)	C (mm)	D (mm)	E (mm)
DEF90	90	55	55	55	10



Marine



Automotive



Roads & Heavy Transport



Building & Construction



Railways



Traffic Information



Refrigeration



No Dig

84 Derby Street
Silverwater NSW 2128
AUSTRALIA

v. 03-01-2

tel. +61 2 9648 4911
fax. +61 2 9648 4783

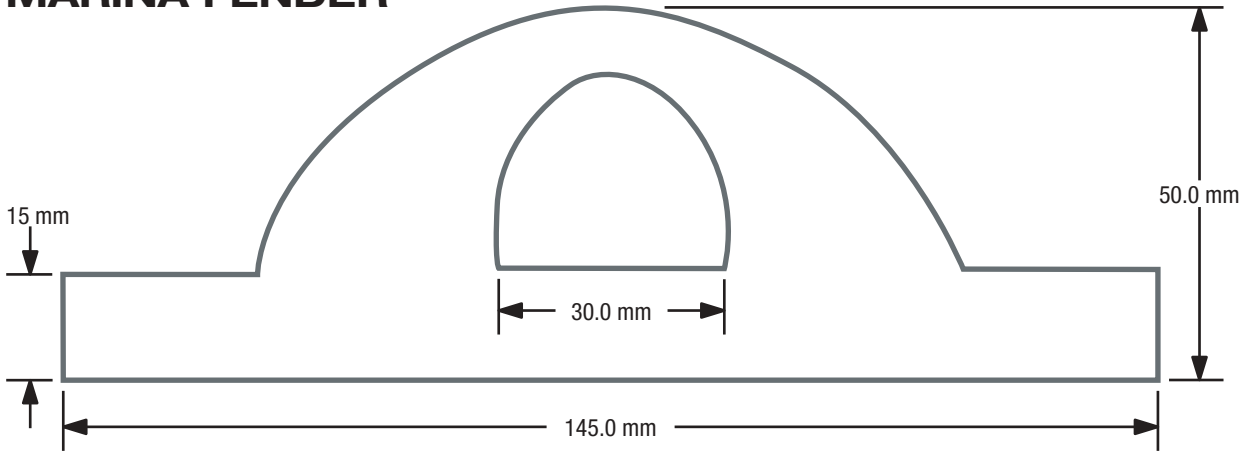
www.derbyrubber.com.au



MARINE FENDER

product data sheet

MARINA FENDER



The Derby marine fender range is designed and manufactured in Australia. It is long lasting and provides superior protection (compared to plastics and other materials) between vessels and fixed and floating structures.

Fenders can be attached to the face of a wharf, pontoon or vessel by mounting bars, bolts, chains, ropes or brackets.

All products are supplied in minimum 6m lengths, Derby Rubber can also cut and drill to specifications. Commercial tolerance of ±3% apply to all dimensions.

The Derby proprietary compound has been developed for both salt and fresh water applications and exhibits these properties.

Shear Resistant

Cushioning

UV Protection

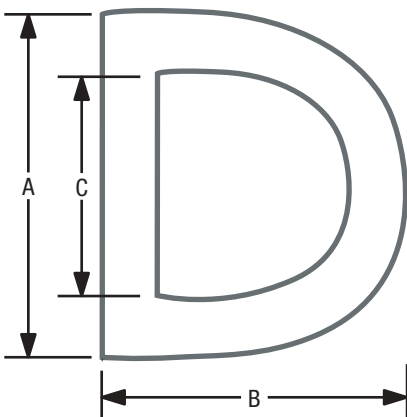
Non-marking

Non-conductive prevents electrolysis

WHITE BLACK

HIGH	HIGH
HIGH	HIGH
HIGH	HIGH
✓	—
✓	—

DINGHY FENDER



DDF45 ACTUAL SIZE

PRODUCT CODE	A (mm)	B (mm)	C (mm)
DDF25	25	20	15
DDF45	45	40	30



84 Derby Street
Silverwater NSW 2128
AUSTRALIA



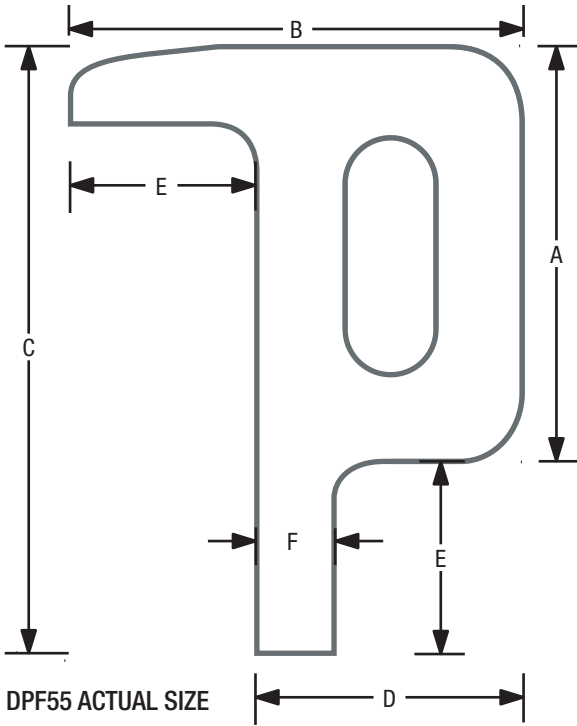
MARINE FENDER

product data sheet



Marine

PONTOON FENDER



DPF55 ACTUAL SIZE

PRODUCT CODE	A (mm)	B (mm)	C (mm)	D (mm)	E (mm)	F (mm)
DPF35	35	60	60	35	25	10
DPF55	55	60	80	35	25	10
DPF75	75	60	100	35	25	10

The Derby marine fender range is designed and manufactured in Australia. It is long lasting and provides superior protection (compared to plastics and other materials) between vessels and fixed and floating structures.

Fenders can be attached to the face of a wharf, pontoon or vessel by mounting bars, bolts, chains, ropes or brackets.

All products are supplied in minimum 6m lengths, Derby Rubber can also cut and drill to specifications. Commercial tolerance of $\pm 3\%$ apply to all dimensions.

WHITE BLACK

Shear Resistant	HIGH	HIGH
Cushioning	HIGH	HIGH
UV Protection	HIGH	HIGH
Non-marking	✓	—
Non-conductive prevents electrolysis	✓	—

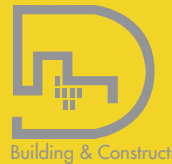
The Derby proprietary compound has been developed for both salt and fresh water applications and exhibits these properties.



Automotive



Roads & Heavy Transport



Building & Construction



Railways



Traffic Information

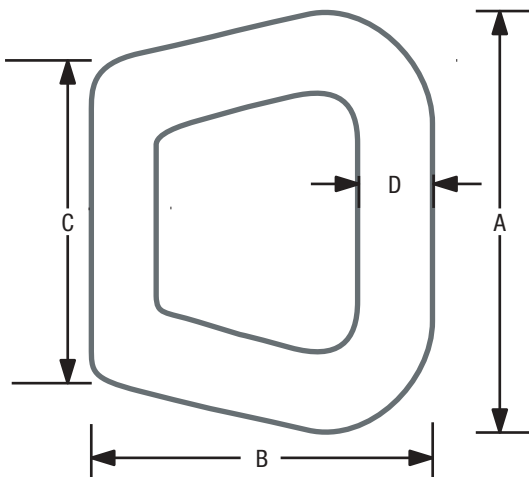


Refrigeration



No Dig

WORKBOAT FENDER



DWF55 ACTUAL SIZE

PRODUCT CODE	A (mm)	B (mm)	C (mm)	D (mm)
DWF55	55	45	40	10
DWF80	80	70	50	15
DWF110	110	85	65	20

84 Derby Street
Silverwater NSW 2128
AUSTRALIA

v.10-01

tel. +61 2 9648 4911
fax. +61 2 9648 4783

www.derbyrubber.com.au



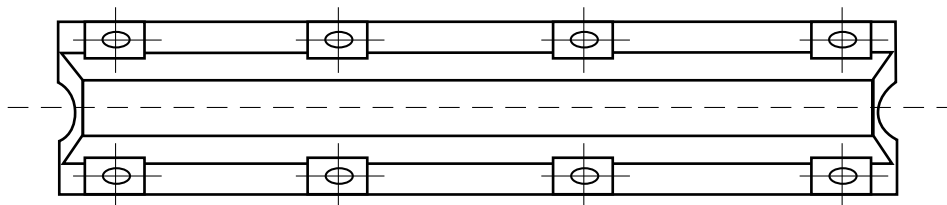
MARINE FENDER

product data sheet

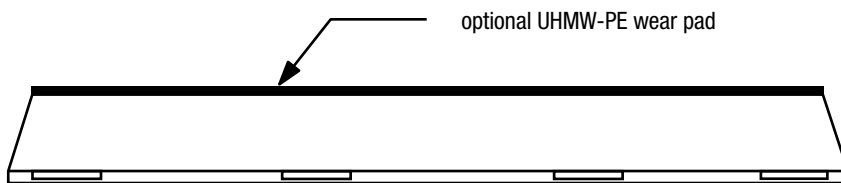
SV TYPE ARCH FENDERS

- Manufactured in four grades of natural rubber.
- Bonded steel plate in each foot and fender face if optional wear pad is fitted.
- Available in lengths from 1000mm up to 3500mm (500mm increments).
- Used in ports worldwide.
- Manufactured and tested to JIS, ASTM, ISO and BS standards.

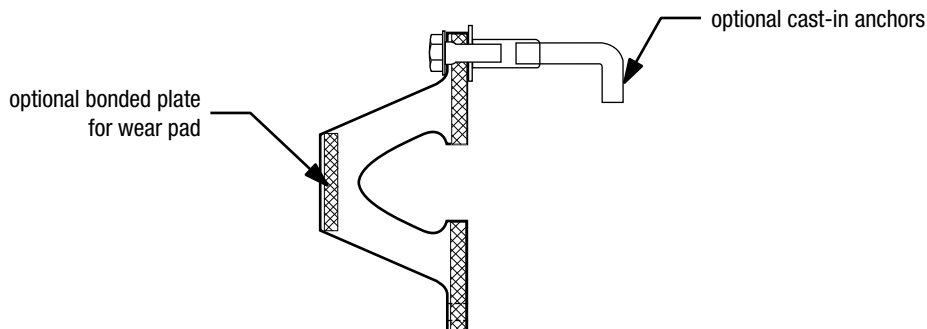
Specific performance information (reaction force and energy absorption) related to product height, length and rubber grade is available from Derby Rubber Products Regional Sales Managers.



PLAN VIEW



SIDE VIEW



END VIEW



84 Derby Street
Silverwater NSW 2128
AUSTRALIA

tel. +61 2 9648 4911
fax. +61 2 9648 4783
www.derbyrubber.com.au

MARINE FENDER

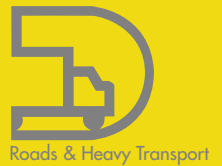
product data sheet

SV TYPE ARCH FENDERS

Indicative Performance Range – 1000mm lengths
Performance tolerance: ±10%

PERFORMANCE (DESIGNED DEFLECTION 45%)

HEIGHT	RUBBER GRADE	SI		METRIC	
		REACTION FORCE (tonf)	ENERGY ABSORPTION (tonf-m)	REACTION FORCE (kN)	ENERGY ABSORPTION (kN-m)
150H	V1	12.8	0.641	126	6.29
	V2	11.3	0.563	111	5.52
	V3	8.44	0.422	82.8	4.14
	V4	5.63	0.281	55.2	2.76
200H	V1	17.1	1.14	168	11.2
	V2	15.0	1.00	147	9.81
	V3	11.3	0.750	111	7.35
	V4	7.50	0.500	73.5	4.90
250H	V1	21.4	1.78	210	17.5
	V2	18.8	1.56	184	15.3
	V3	14.1	1.17	138	11.5
	V4	9.38	0.781	92.0	7.66
300H	V1	25.7	2.57	252	25.2
	V2	22.5	2.25	221	22.1
	V3	16.9	1.69	166	16.6
	V4	11.3	1.13	111	11.1
400H	V1	34.2	4.56	335	44.7
	V2	30.0	4.00	294	39.2
	V3	22.5	3.00	221	29.4
	V4	15.0	2.00	147	19.6
500H	V1	42.8	7.13	420	69.9
	V2	37.5	6.25	368	61.3
	V3	28.1	4.69	276	46.0
	V4	18.8	3.13	184	30.7
600H	V1	51.3	10.3	503	101
	V2	45.0	9.00	441	88.3
	V3	33.8	6.75	331	66.2
	V4	22.5	4.50	221	44.1
800H	V1	68.4	18.2	671	178
	V2	60.0	16.0	588	157
	V3	45.0	12.0	441	118
	V4	30.0	8.00	294	78.5
1000H	V1	85.5	28.5	838	279
	V2	75.0	25.0	735	245
	V3	56.3	18.8	552	184
	V4	37.5	12.5	368	123



84 Derby Street
Silverwater NSW 2128
AUSTRALIA

tel. +61 2 9648 4911
fax. +61 2 9648 4783
www.derbyrubber.com.au